


HOME COLLECTION

2022



HANDCRAFTED IN FRANCE
HEADPHONES





For more than four decades, Focal has created speaker drivers and high-end loudspeakers that deliver a unique sound. Our brand values are innovation and performance; excellence and pleasure. We are globally renowned for our exclusive technologies. The result of this technological heritage is class-leading products offering a natural, authentic performance, imbued with clarity and power. Our handcrafted headphone collection combines this outstanding listening experience with exquisite, high-quality design, for an all-round luxury sensation.



OPEN-BACK HEADPHONES

Ultimate listening experiences at home

Utopia and Clear Mg are high-fidelity headphones with an open-back design, offering exceptional audio reproduction thanks to their latest generation speaker drivers with no restriction: completely free, the sound is pure and sensational. Their carefully selected finishes, meticulous detailing and fine materials augment the elegance of Utopia and Clear Mg, enhancing your listening pleasure.



CLOSED-BACK HEADPHONES

Sound immersion

Focal's engineers have used cutting-edge techniques to bring the best aspects of open-back headphone performance to closed-back design. Stellia and Celestee incorporate speaker drivers capable of working within a limited space, while offering perfect soundproofing and exceptional listening quality. These headphones perfectly illustrate the brand's refusal to compromise, finished with a touch of French sophistication.



ANC HEADPHONES FOR TRAVEL

Travel with Hi-Fi

The Bathys wireless headphones bring you Focal pure sound while you're on the move. Its speaker drivers are made in France, delivering a pure hi-fi sound while its Bluetooth® and Active Noise Cancellation technologies allow you to listen to music without being disturbed by noises around you. This result is achieved thanks to a microphone system which captures ambient sounds and analyses them to produce a reverse frequency, reducing unwanted background noise. This technology is ideal for enjoying your favourite music, a podcast or a film, or answering calls. Take your emotions along for the ride, with Focal headphones for travel.



PASSIVE HEADPHONES

Passive headphones require external amplification and digital/analog converter (DAC), connected to the headphones by a cable (a Jack, for example). The DAC converts the digital signal from the source (streaming or other) into an analog signal. This is then processed by the amplifier, which increases the amplitude of the signal and provides the necessary power for the speaker drivers to faithfully reproduce the sound.

While smartphones/computers have an amplifier built-in, we advise the use of a dedicated headphone amplifier, as Naim Uniti Atom Headphone Edition, to allow the headphones to deliver their full performance.

ACTIVE HEADPHONES

Active headphones incorporate an amplifier and digital/analog converter (DAC) which directly process the sound signal mitted from their wireless audio source (smartphone, tablet, etc.) and amplify it to deliver high-quality sound reproduction. The headphones operate on an internal battery, so all you need to do is ensure that it's charged. "All-in-one", the Bathys active headphones offer freedom of movement and Hi-Fi sound.





01.
UTOPIA

11



02.
STELLIA

17



03.
CLEAR MG

23



04.
CELESTEE

29



05.
RADIANCE

35



06.
UNITI

41



07.
BATHYS

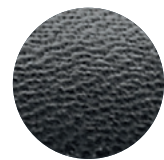
47

01. UTOPIA

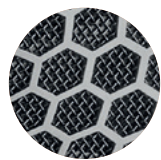
Pure sound at its finest

Utopia are Focal's flagship headphones. Thanks to their innovative speaker drivers, the listening experience is stunningly realistic. The leather used on the earcups, as well as the woven carbon fibre of the headband, lend an elegant touch to the high-performing, highly comfortable Utopia. The honeycomb grilles and the Black Chrome colour ring highlight subtle details of the design, such as the 'Yin and Yang' on the exterior of the earcup, which represents the perfect harmony between high technology and design.

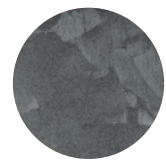




Real
leather



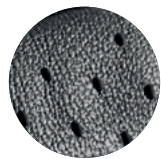
Black Chrome
finish



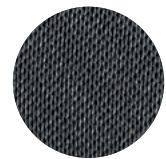
Forged,
recycled carbon



Unrivalled
open design



Leather
earpads



Woven
carrying case





UTOPIA

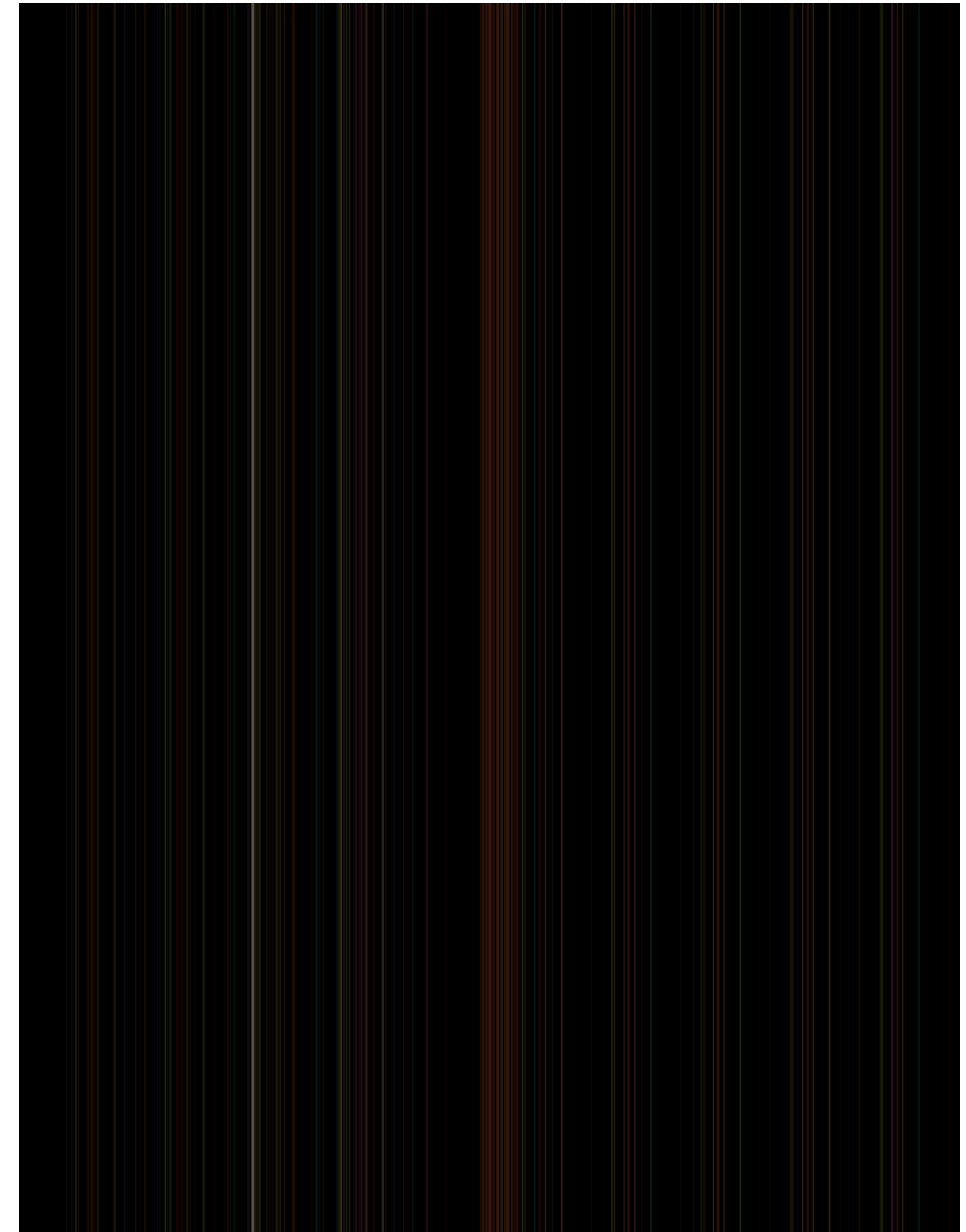
Over-ear open-back headphones

Impedance	80Ω
Sensitivity	104dB SPL / 1mW @ 1kHz
Frequency response	5Hz – 50kHz
THD	<0.2% @ 1kHz / 100dB SPL
Speaker driver	1.6" (40mm) pure Beryllium 'M'-shaped dome
Weight	1.08lb (490g)
Cables and connectors	<ul style="list-style-type: none">• 1 x 5ft (1.5m) cable with 1/8" (3.5mm) unbalanced Jack connector & Lemo® connectors• 1 x 9.8ft (3m) balanced 4-pin XLR cable & Lemo® connectors• 1 x Jack adapter 1/8" (3.5mm) female – 1/4" (6.35mm) male
Carrying case	9.8x9.4x4.7" (25x24x12cm)



HANDCRAFTED

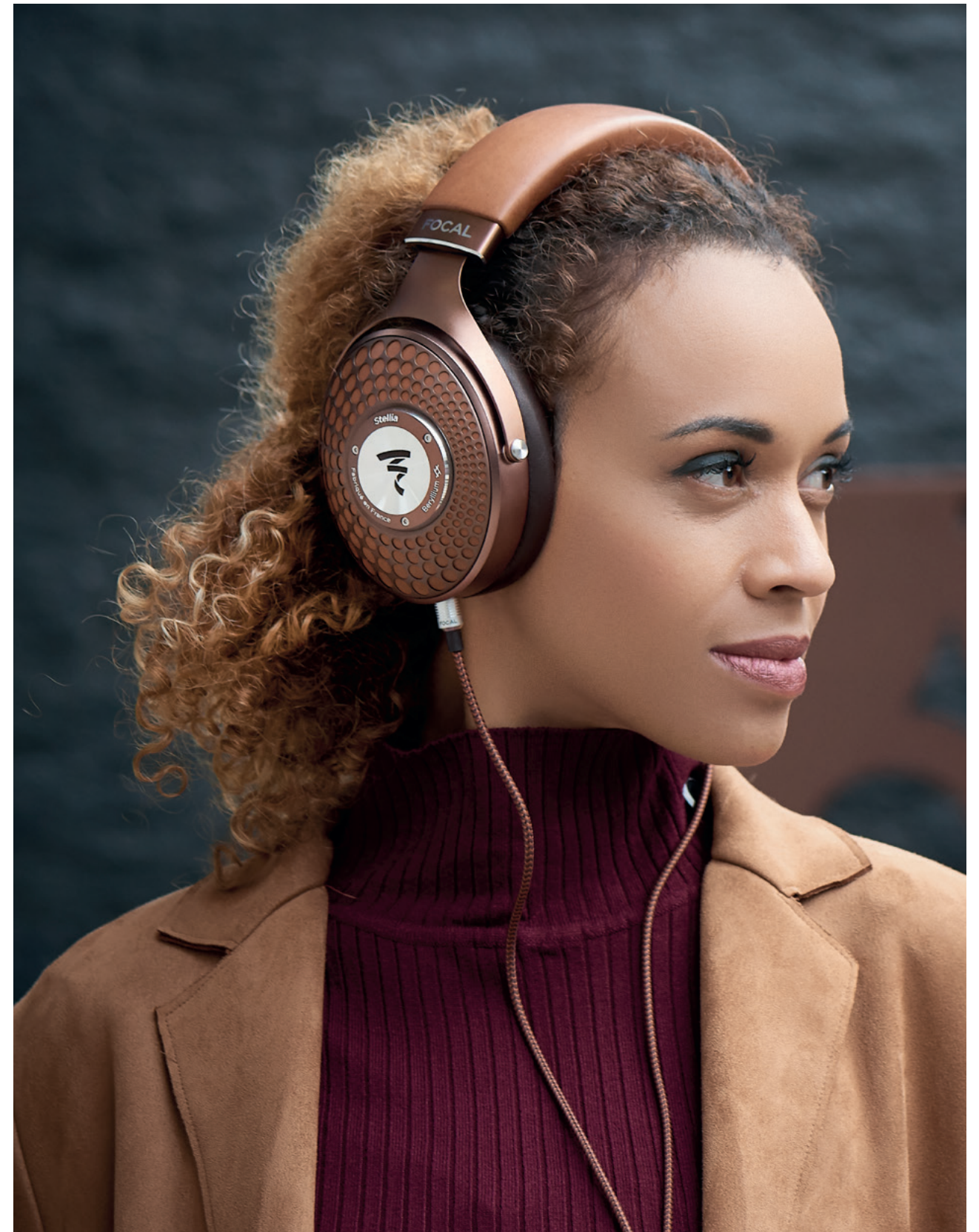
IN FRANCE



02. STELLIA

Pure sound everywhere

Each Stellia component is developed in the pursuit of excellence and refinement, down to the full-grain leather of the headband, the beautifully styled earcups and the ultra-comfortable earpads. The full-range driver, with its 'M'-shaped pure Beryllium dome, combines an array of Focal innovations – together they deliver an incredible listening experience. Stellia pushes the acoustic boundaries of the very best closed-back headphones and stands out as the reference model in its class.





Full-grain
leather



Cognac
finish



Solid
Aluminium



Focal
signature



Mocha
finish



Woven
carrying case





STELLIA

Over-ear closed-back headphones

Impedance	35Ω
Sensitivity	106dB SPL / 1mW @ 1kHz
Frequency response	5Hz - 40kHz
THD	0.1% @ 1kHz / 100dB SPL
Speaker driver	1.6" (40mm) pure Beryllium 'M'-shaped dome
Weight	0.96lb (435g)
Cables and connectors	<ul style="list-style-type: none">• 1 x 4ft (1.2m) cable with 1/8" (3.5mm) unbalanced Jack connector• 1 x 9.8ft (3m) balanced 4-pin XLR cable• 1 x Jack adapter 1/8" (3.5mm) female - 1/4" (6.35mm) male
Carrying case	9.8x9.4x4.7" (25x24x12cm)



HANDCRAFTED
IN FRANCE



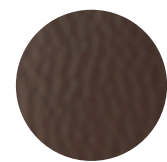
03.

CLEAR MG

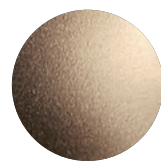
Experience excellence

Thanks to their Magnesium drivers, fully open at the back, Clear Mg headphones reveal the smallest details of your music with precision and finesse. You'll even forget you're wearing them... The solid aluminium yoke offers pure, seamless design. The exterior of the earcups features a honeycomb pattern for yet more sophisticated elegance, enhanced further by the Chestnut and Mixed-Metals finish, as well as the genuine leather and microfibre earpads.

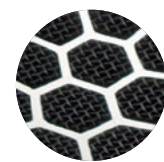




Semi-aniline
leather



Chestnut & Mixed-Metals
finish



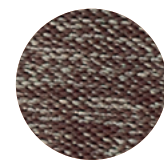
Honeycomb
grille



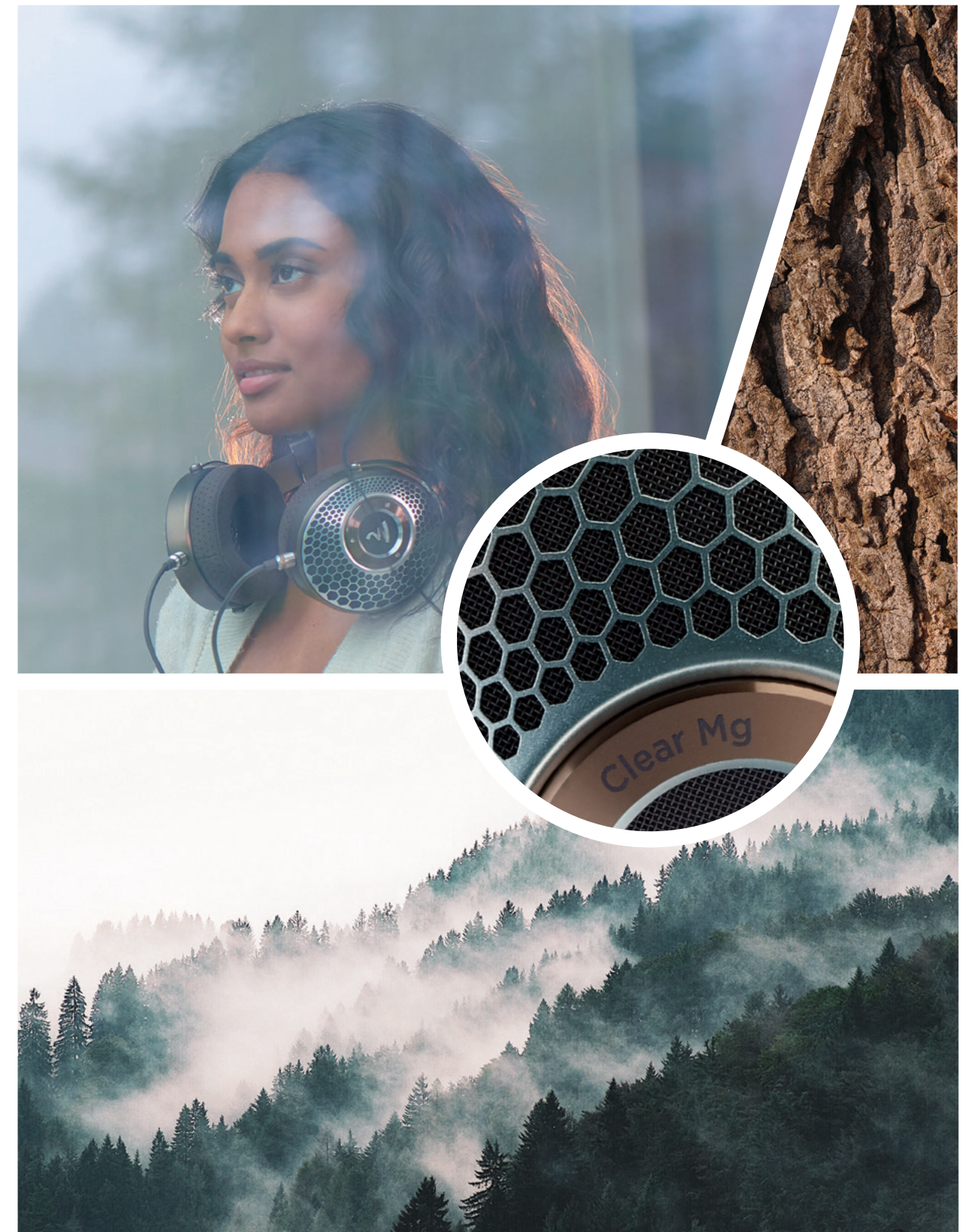
Focal
signature



Perforated
microfibre



Woven
carrying case





CLEAR MG

Over-ear open-back headphones

Impedance	55Ω
Sensitivity	104dB SPL / 1mW @ 1kHz
Frequency response	5Hz - 28kHz
THD	0.25% @ 1kHz / 100dB SPL
Speaker driver	1.6" (40mm) 'M'-shaped Magnesium dome
Weight	0.99lbs (450g)
Cables and connectors	<ul style="list-style-type: none">• 1 x 3.9ft (1.2m) cable with 1/8" (3.5mm) unbalanced Jack connector• 1 x 9.8ft (3m) balanced 4-pin XLR cable• 1 x Jack adapter 1/8" (3.5mm) female - 1/4" (6.35mm) male
Carrying case	9.8x9.4x4.7" (25x24x12cm)



HANDCRAFTED
IN FRANCE



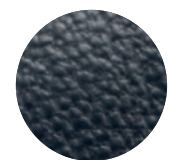
04.

CELESTEE

Reveal the intensity of every moment

Enjoy a listening experience without a noisy environment disturbing your pleasure or worrying about annoying the person next to you: this is the promise made and kept by Celestee. Thanks to its drivers, Celestee delivers audio quality without compromise, with outstanding soundproofing and comfort. Precision and balance define the sound reproduction, while elegance embodies the design. Lastly, the Navy Blue finish and carefully selected materials further refine these headphones.

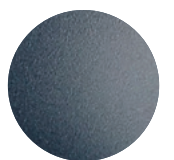




Semi-aniline
leather



Soft Copper
finish



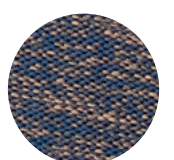
Solid
Aluminium



Stainless
steel grille



Navy Blue
finish



Woven
carrying case





CELESTEE

Over-ear closed-back headphones

Impedance	35Ω
Sensitivity	105dB SPL / 1mW @ 1kHz
Frequency response	5Hz - 23kHz
THD	0.1% @ 1kHz / 100dB SPL
Speaker driver	1.6" (40mm) Aluminium/Magnesium 'M'-shaped dome
Weight	0.95lb (430g)
Cables and connectors	<ul style="list-style-type: none">• 1 x 4ft (1.2m) cable with 1/8" (3.5mm) unbalanced Jack connector• 1 x Jack adapter 1/8" (3.5mm) female - 1/4" (6.35mm) male
Carrying case	9.8x9.4x4.7" (25x24x12cm)



HANDCRAFTED
IN FRANCE

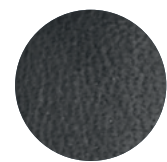


05. RADIANCE

Bentley Special Edition

Focal for Bentley Radiance closed-back headphones are a special edition created in honour of the partnership between Focal, Naim Audio and prestigious car manufacturer, Bentley Motors. Engineers and designers have worked together to develop these high-end and elegant headphones. Authentic, refined Bentley touches are added with Copper finishes and Diamond motifs: every detail has been considered, making Radiance a collector's item.

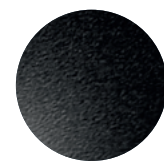




Full-grain
leather



Bentley
special edition



Solid
Aluminium



Diamond
motifs



Copper
finishes



Woven
carrying case





RADIANCE

Over-ear closed-back headphones

Impedance	35Ω
Sensitivity	105dB SPL / 1mW @ 1kHz
Frequency response	5Hz - 23kHz
THD	0.1% @ 1kHz / 100dB SPL
Speaker driver	1.6" (40mm) Aluminium/Magnesium 'M'-shaped dome
Weight	0.96lb (435g)
Cables and connectors	<ul style="list-style-type: none">• 1 x 4ft (1.2m) cable with 1/8" (3.5mm) unbalanced Jack connector• 1 x Jack adapter 1/8" (3.5mm) female - 1/4" (6.35mm) male
Carrying case	9.8x9.4x4.7" (25x24x12cm)



HANDCRAFTED
IN FRANCE



06.

UNITI ATOM

Headphone Edition

Built-to-last in Britain in the Naim workshops, Uniti Atom Headphone Edition is designed to be the ultimate solo listening source at home. This innovative all-in-one system combines beautiful design with stunning functionalities and all the streaming features you need (Qobuz, TIDAL, Spotify®). Simply connect it to your wi-fi, plug in your favourite headphones and escape into a world of superior-quality music streaming, radio, podcasts and more.





Sleek volume wheel



High performance transformer



32bits/384kHz resolution



Multiple streaming services



All-in-one system



Digital and analogue inputs





UNITI ATOM

Headphone Edition

Type	Streaming headphone amplifier	
Audio inputs	Digital	2 x Optical S/PDIF up to 96kHz, Coaxial RCA (up to 24bit/192kHz, DoP 64Fs)
	Analogue	1 x Stereo RCA pair
	USB	2 x USB 2.0 (Type A connector)
	Streaming	Apple AirPlay 2, Chromecast Built-in, UPnP™, Spotify® Connect, TIDAL, Roon Ready, Bluetooth®, Internet Radio, Qobuz
Headphone outputs	4.4mm Pentaconn (balanced) 4 pin XLR (balanced) 6.35mm (¼ inch) jack (unbalanced) 1.5W RMS per channel into 16ohms Suitable for headphones from 16Ω and upwards	
Audio outputs	Balanced XLR Preamp output RCA Preamp output Multiroom: Sync up to five Naim Streaming products and control via the Naim App	
Power	17W (typical use)	
Dimensions (HxWxD)	3.74x9.65x10.43" (9.5x24.5x26.5cm)	
Weight	15.4lbs (7kg)	



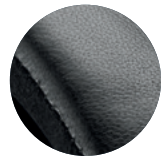
07.

BATHYS

Travel with High-Fidelity

Bathys, the wireless headphones with Active Noise Cancellation are the perfect travel companion. In addition to offering perfect soundproofing from your surroundings, they deliver a pure hi-fi sound thanks to Focal's, made in France, speaker drivers and to the integrated USB-DAC mode offering a resolution of up to 24 bits/192kHz. Comfortable and refined, Bathys features numerous functionalities as well as easy-to-access control buttons for a very simple Bluetooth® use.

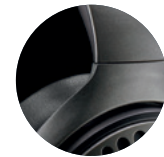




Real
leather



Metallic
finish



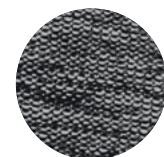
Light Magnesium
yoke



Backlighting
logo



Solid
Aluminium



Woven
carrying case





BATHYS

Closed-back wireless headphones
with active noise cancelling

Bluetooth®	5.1 Multipoint ; range > 15m
Audio codecs	SBC, AAC, aptX™ Adaptive, aptX™
Autonomy	30h Bluetooth® Noise Cancelling 35h Jack mode 42h USB DAC mode
Voice assistants	Google Assistant, Amazon Alexa
Microphones	8
Control application	Focal & Naim, iOS and Android compatible
Frequency response	15Hz - 22kHz
THD	<0.2 % @ 1kHz / 100dB SPL
Connections	Bluetooth® / Jack 3.5mm / USB-C®
Speaker driver	1.6" (40mm) Aluminium/Magnesium 'M'-shaped dome, Made in France
Weight	0.77lb (350g)
Cables and connectors	<ul style="list-style-type: none">• 1 x 4ft (1.2m) cable with 1/8" (3.5 mm) Jack connector• 1 x 4ft (1.2m) USB-C® cable
Carrying case	9.5x8.3x2.8" (24x21x7cm)



ACCESSORY

Headphones stand

Specifically designed for Focal headphones, this stainless steel stand is also available as part of our collection. Its stylish shape, reminiscent of the Focal flame logo, provides a simple, aesthetic storage solution for your headphones, while the sleek design is finished with laser engraving. Thanks to its Setapan® base, it ensures perfect stability.





UTOPIA



'Probably the best electrodynamic headphones ever created'

ON MAG



'I consider this headphone a masterpiece'

HIFI +

'It is, realistically, the best headphone on the planet right now'

AV FORUMS



CLEAR MG



'Everything about the Focal Clear Mg is close to perfect'

FORBES



'Clear Mg is masterful. Focal's promise of excellence is warranted'

HI-FI TRENDS



STELLIA



'They are a slam dunk.'

THE ABSOLUTE SOUND



'Simply the best closed-back headphones we've heard'

WHAT HI-FI



CELESTEE



'It really was love at first sight - and at first listen'

MOON AUDIO

'Easily the most subtly stunning-looking Focal headphone'

AUDIOHOLICS



'These closed-back headphones ooze sophistication and have sound quality to match with electrifying detail and timing'

BBC MUSIC



RADIANCE



'Focal has made a pair of headphones that sound as good as they look'

FORBES

'The French manufacturer Focal is no stranger to producing high-quality headphones, but I think the Radiance deserves its unique spot in their catalog'

MAJOR HIFI



'Focal has managed to create what I honestly believe is the price-to-performance champion in the high-end closed-back headphone category'

HEADFONIA



BATHYS



'Focal's first wireless over-ear headphones are a complete success - and a good-looking success at that'

T3

'Sound performance above everything'

LES NUMÉRIQUES



'A dive into an audiophile bubble made in France'

ON MAG

'The Focal Bathys are the world's best-sounding wireless headphones'

WHAT HIFI



UNITI



'Naim's new Uniti Atom Headphone Edition is just perfect for private listening'

FORBES



'Luxury-tier quality in hardware, design and sound, built to keep pace with the best headphones made today'

AUDIOHOLICS

'You really get the Naim sound, now delivered straight to your ears'

HI-FI.NL

COLLECTIONS

Combining performance and design, Focal's collections are a revelation, awakening the emotions. And it doesn't matter where you are. At home with hi-fi and in-wall/in-ceiling loudspeakers, Home Cinema systems and open-/closed-back headphones; on the go with in-car kits; during travel with Bluetooth® Noise Cancelling Headphones; in the studio with monitors and at sea with specialist yacht solutions.



Home Collection



Motorities Collection



Professional Collection

FOCAL *Powered by* naim

Enjoy an incredible sound experience

Find our products in 10,000 retail partner stores across the world, but also in our Focal Powered by Naim shops. These stores, dedicated to our brands, invite you to dive into our world, our savoir-faire and immerse yourself in the Focal & Naim sound.

ASIA

Bengaluru - Guangzhou
Seoul Gangnam-gu
Seoul Hanam
Taipei

AUSTRALIA

Adelaide - Melbourne
Perth - Sydney

EUROPE

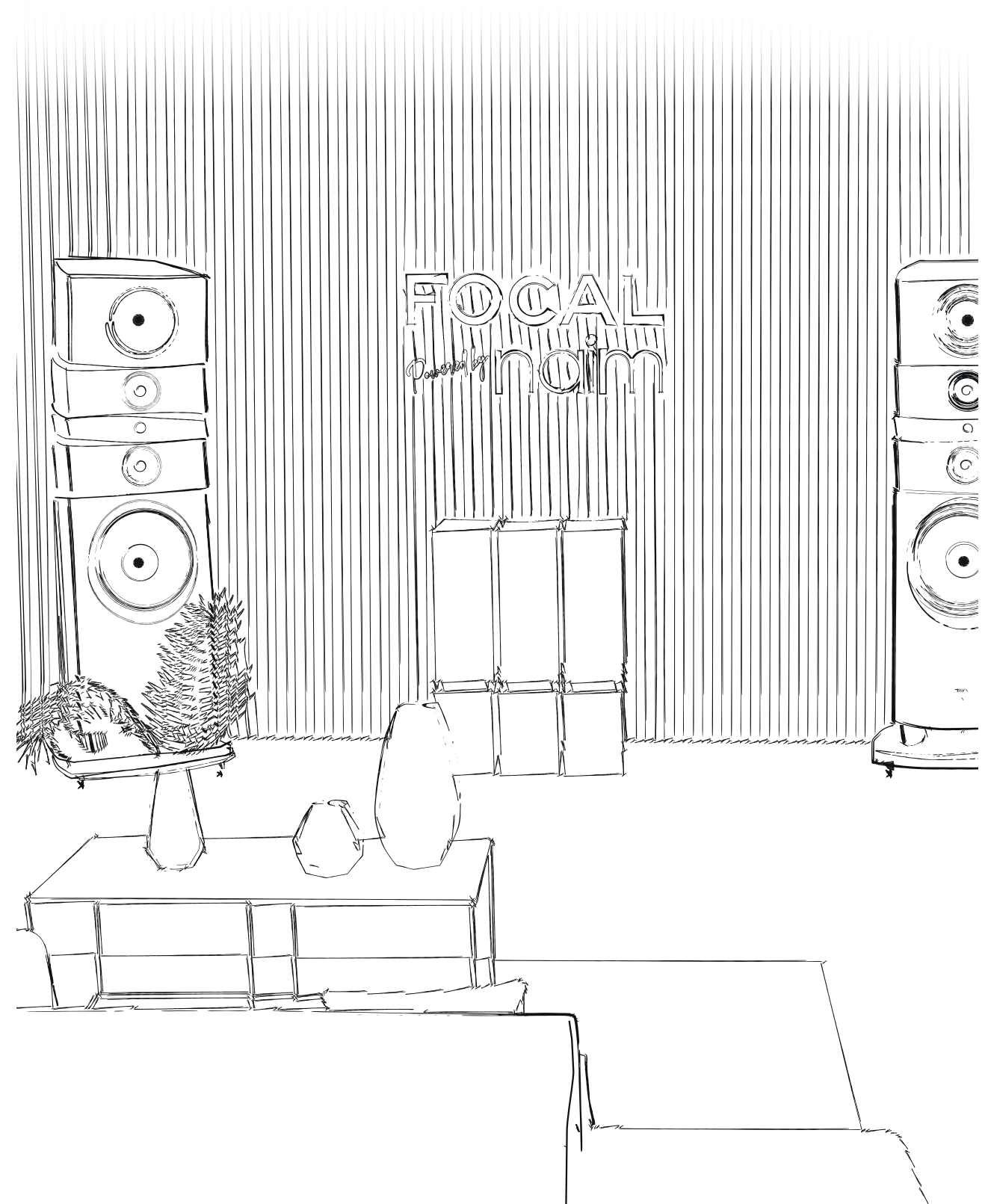
Cannes - Lyon
Perpignan
Berlin - Bad Schwartau
Sevenoaks
Prague
Bucarest
Vilnius

CANADA

Barrie - Lethbridge
Saskatoon
Winnipeg

USA

Austin
Houston
Miami





For more information, scan the QR code
or find us at:

www.focal.com



Focal JMLab®

BP 374 - 108, rue de l'Avenir - 42353 La Talaudière cedex - France - +33 (0) 477 435 700

Focal® is a registered trademark of Focal JMLab®, Naim® is a registered trademark of Naim Audio®.

Due to constant technological advances, Focal JMLab® and Naim Audio® reserve the right to modify prices and specifications without notice.

Non-binding pictures. Pictures : L'Atelier Sylvain Madelon / p.47-49: Die Frau / Envato Elements. SCAA/29/11/2022 - v3

